

Hanse 400 2006



Main Info

Price

€95000

Length

11.98

Built

2006

Model

400

Builder

Hanse

Location

Preveza

Accomodation

6

Draft

1.98

VAT

Paid

Engine Type

Yanmar 3JH4

Engine Hours

1750

Engine HP

40

Beam

4.08

Overview

For Sale: 2006 Hanse 400 - VAT Paid - Ready to Sail

Use the link below for a 360 Virtual Tour:

https://nodalview.com/s/1_TO-I331DVAuhtAuUXNy4

This 2006 Hanse 400 is a stylish and performance-oriented cruiser, offering comfortable accommodations and modern equipment. Located in Preveza, Greece, this well-maintained yacht is ideal for family cruising or longer journeys. With three spacious cabins and a thoughtfully designed layout, it's ready for new adventures on the open water.

Key Features:

- **Engine:** Powered by a **Yanmar 3JH4** 40 HP engine with only 1,750 hours, this yacht features a **sail drive** and a 2-blade propeller, delivering efficient and reliable performance.
- **Accommodation:** The Hanse 400 accommodates up to **6 guests** comfortably in **3 double cabins** and **1 head**. The saloon features a **U-shaped sofa** and a **convertible table** that can transform into an additional double bed, making it a versatile space for relaxing and dining.
- **Galley:** The galley includes a **double stainless steel sink**, a **2-burner gas cooker with oven**, and a **refrigerator**, providing all the essentials for onboard meal preparation.

Sails and Rigging:

- **Sails:** Equipped with a **fully battened mainsail**, a **jib** (both by North Sails), and a **gennaker**, this yacht is ready to sail in a variety of conditions. The yacht also includes spare mainsail and jib.
- **Deck Layout:** The deck is designed for ease of use with **4 manual winches**, **teak-sidedecks**, and a **teak cockpit**, offering both style and functionality.

Electrical and Solar Power:

- **Solar Panels:** Equipped with **2 solar panels** connected to a SunWare Fox-350 controller, providing sustainable energy to keep batteries charged while at anchor.
- **Battery Setup:** The yacht includes **service & engine batteries**, a **battery charger**, and a shore power inlet for reliable power management.

Navigation and Electronics:

- **Simrad Navigation Package:** This Hanse 400 is equipped with a **Simrad AP25 autopilot**, **Cobra Marine VHF GPS**, and additional instruments, including an **echo sounder** and **Clipper wind instrument** for safe and accurate navigation.
- **Bow Thruster:** The retractable **Max Power bow thruster** provides extra maneuverability and efficiency, making docking easier in tight spaces.

Deck and Additional Features:

- **Cockpit Comfort:** The cockpit is outfitted with **cockpit cushions**, a **folding cockpit table**, and a **swimming ladder**, making it a comfortable space for relaxing and socializing.
- **Tender:** Includes a **new dinghy** with a **new 2.3 HP outboard engine**, perfect for easy shore access.

Safety and Extras:

- **Safety Equipment:** Outfitted with a **liferaft**, a fire safety gear, and essential navigation and communication devices, ensuring peace of mind while at sea.

- **Anchoring:** The yacht is fitted with a **10kg Delta anchor** and an electric anchor windlass for easy and secure mooring.

This Hanse 400 is a well-equipped and stylish yacht that provides both performance and comfort, ideal for coastal cruising or longer voyages. With its recent upgrades and thoughtful design, it's ready for immediate use.

Contact us today to arrange a viewing or for more information!

Specifications

Specifications:

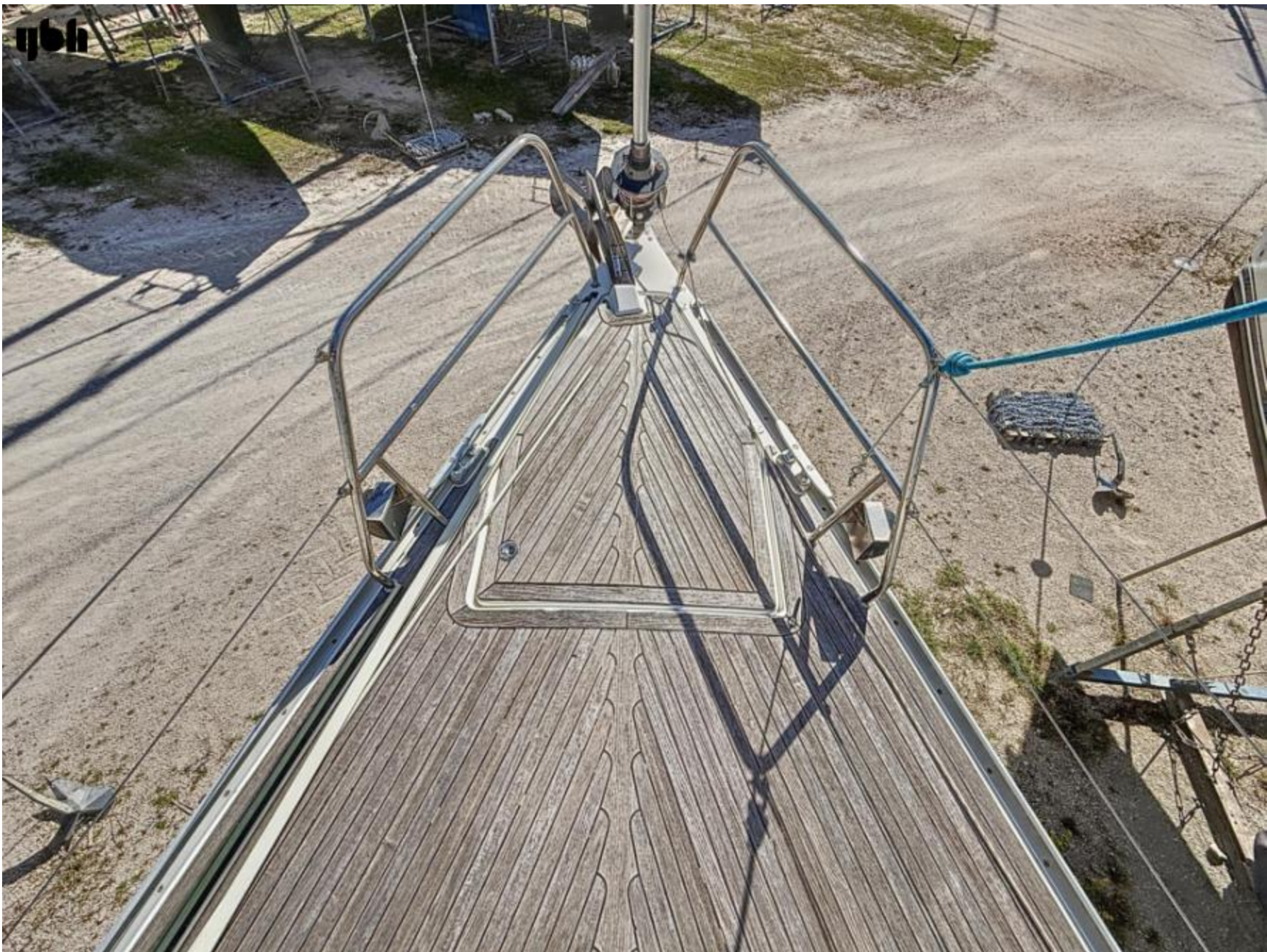
- **Length Overall:** 11.98 m (39.3 ft)
- **Beam:** 4.08 m
- **Max Draft:** 1.98 m
- **Fuel Capacity:** 140 liters
- **Water Capacity:** 300 liters

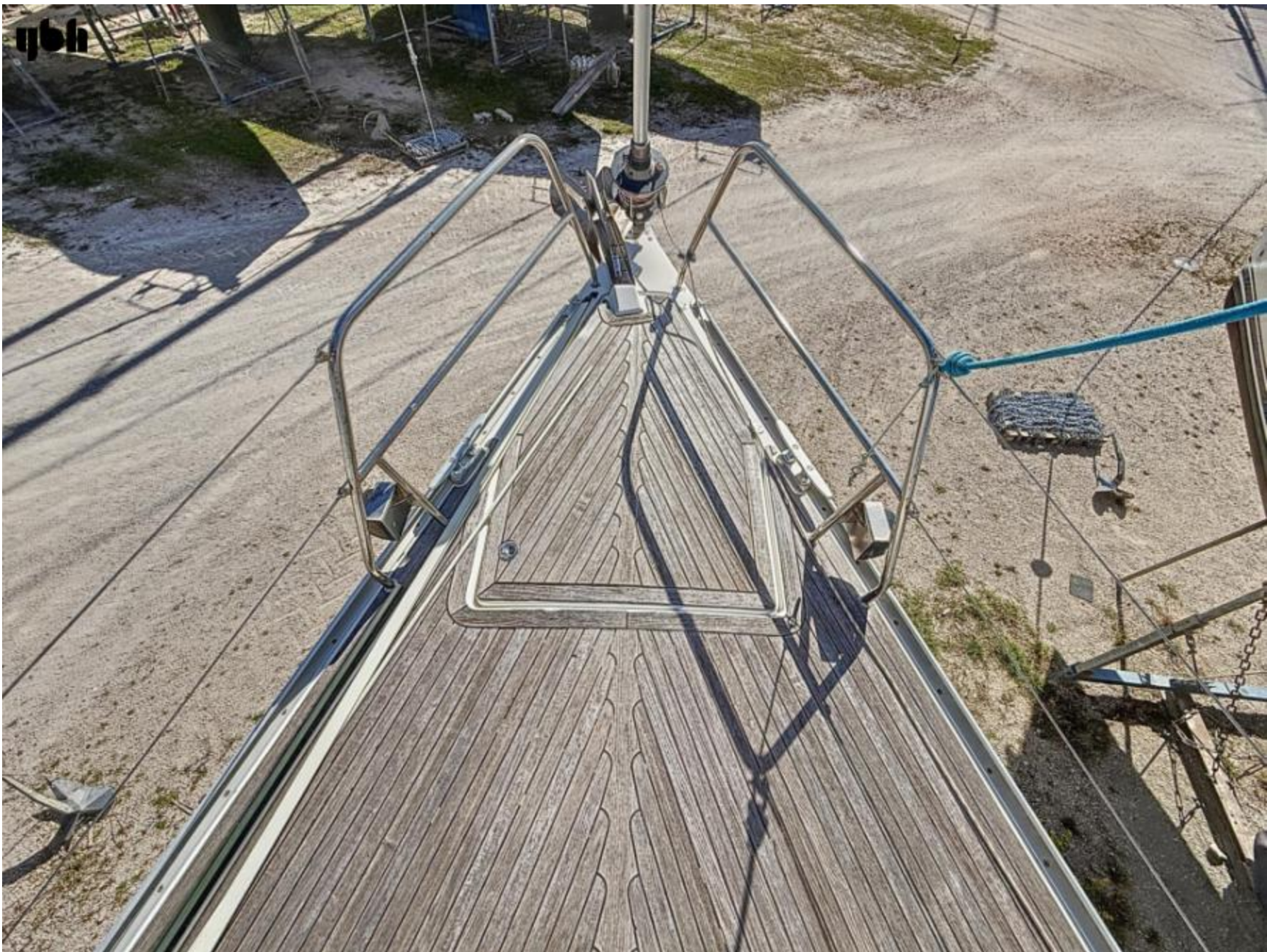
ايجي



ايجي







۱۶۱

۱۶۱



۱۶۱



۱۶۱



۱۶۱







16h



۱۶۱



1161



۱۶۱



116h



1161



۱۶۱



۱۶۱



۱۶۱



۱۶۱



gbl



۱۶۱

